

ASMAZ

timber structures

ASMAZ TIMBER FRAMED STRUCTURES

*It is the only name in Turkey in terms of all projects,
architecture, engineering, manufacturing and application for
Timber Framed Structures*



The foundation of ASMAZ Ahşap Karkas Yapılar was laid by the valuable founder my father Hüseyin Avni ASMAZ in 1955. We started our business as ASMAZ İnşaat by carrying out hundreds of construction projects. Since the foundation of our company, one of our changeless principles that we have adopted is to offer a luxurious and quality life in high quality and safe buildings.

We decided to be a company that specializes in building timber structures in 2008. Our company that we restructured as ASMAZ Ahşap Karkas Yapılar, became one of the most reliable and powerful companies in architecture, engineering, production and implementation of timber framed structure in Turkey. We continue constructions of our projects which are customized according to our customers' special requests and needs in a wide variety of areas such as houses, business centers, shopping centers, public space projects, sports facilities within the country and abroad.

ASMAZ Ahşap Karkas Yapılar creates such places aimed at providing breathing, eco-friendly and healthy natural living areas with high quality of life by virtue of the nature of the wood and its carbon retention characteristic. Another outstanding feature of timber structures is to have the most durable construction material against earthquake, fire, climate change, and natural disasters.

As ASMAZ Ahşap Karkas Yapılar, we supply certified structural wood materials with engineering specifications from overseas manufacturers which are known as the best in the world to use for our eco-friendly structures with high energy efficiency.

We perform works of engineering for all our projects in conformity with European Timber Structures Regulation (ECS- Eurocode 5 Design of Timber Structures). Our production and erection crews consist of experts who are experienced, trained on regular basis and following the innovations in the world. In our production facility located in Yalova, we are offering unlimited design solutions, faultlessly efficient production, and fast and smooth installation process by using latest technologies. We are now closer to our customers and business partners through our office consisting of architecture and marketing departments opened in Istanbul in 2015.

One of our most important missions is to raise awareness in timber frame structures of our society and our entrepreneurs. We aim at training younger generations in order to make them specialized in constructing of timber framed structures in collaboration with universities; keeping them informed about the construction industry and what's new and all innovative developments in timber frame structures by participating in various trainings, workshops and conferences. Therefore, we give trainings on timber framed structures several times in a year in architecture and engineering faculties.

As ASMAZ Ahşap Karkas, we aspire to create public opinion on the issue as a social responsibility project, to ensure the widespread use of timber frame structures and to contribute to upgrade service quality standards.

I wish you happy days in healthy and eco-friendly timber framed structures.

Sincerely

*Mehmet Akif Asmaz
Chairman of the Board
ASMAZ Ahşap Karkas Yapılar*

ASMAZ

timber structures



ASMAZ TIMBER FRAMED STRUCTURES

ASMAZ Ahşap Karkas Yapılar is one of the leading and the most successful and respected companies in the timber framed structures field of Turkey by designing ecological buildings which are user-friendly and eco-friendly and they reduce energy costs, require minimal maintenance, provide comfort and healthy living conditions and comply with international building codes.

Since 1955, ASMAZ İnşaat company would carry on its activities with its projects, stable structure, and customer-oriented service approach without compromising its quality principles. ASMAZ İnşaat decided to be a company that specializes in building timber structures in 2008. It moved in the direction of corporate restructuring including revision of its investments and aimed at training its team in order to make them specialized in particular timber framed structures by participating in various trainings, workshops and conferences. ASMAZ Ahşap Karkas Yapılar that proceeds on its way with such a

restructuring policy and integrated with the world, following all technological developments and hosting the representations of the largest companies of the world has been operating in the construction industry as a reliable, powerful corporate. Timber Frame Construction System is the world's most advanced, lightweight construction technology that meets the market's needs and people's expectations of life in healthy and durable structures.

Since 2008, ASMAZ Ahşap Karkas Yapılar provides its safe, healthy and comfortable living areas with its registered trademark by producing eco-friendly structures in Yalova factory which are suitable for all weather conditions, energy-efficient as a result of engineering calculations made for its customers in the country and abroad. As Asmaz Ahşap Karkas Yapılar headquarter is in Yalova, now it is closer to its customers and business partners through its office in Istanbul consisting of architecture and marketing departments.

WOOD ENGINEERING

ASMAZ Timber Framed Structure system is an international construction system that its static calculations made in accordance with the special software providing protection against all the possible damaging effects of natural disasters. ASMAZ Ahşap Karkas carries on its works of installation by static calculation in conformity with European Timber Structures Regulation (EC-5 Eurocode 5 Design of Timber Structures) entered into force at the same time in all european economic community countries. All engineering calculations at the company are made by considering all regulations concerning timber structures.



The essential point of engineering calculations is to determine the type of structural timber intended to be used and establish its strength criteria.

All kind of materials from solid wood, laminated wood, wood panels to composite wood must have structural features according to The European Timber Structures Regulation.

ASMAZ Ahşap Karkas Yapılar uses only timber as a structural material for all constructions. Products of connection technology which are the most important factor in the implementation of engineering calculations are also selected from structural materials which have been analysed by engineering calculations.

Asmaz Ahşap Karkas Yapılar works on architectural custom designs, personalized architectural projects and finds solutions based on customers' needs and expectations. After designing architectural projects, static

calculations are made by software systems. The loads generated by natural hazards such as earthquake, winds, rain, snow including dead and live loads are important parameters affecting the engineering calculations. Many factors such as location, climate and seismic data including purpose of use contain the basic information required for engineering calculations in a project preparation.

Having certified structural properties such as nails, screws, bolts etc in terms of use of metal connection technology products is the sine qua non of every production.

ASMAZ Ahşap Karkas Yapılar is the only company which implements worldwide solutions that have applicable engineering calculations in our country in terms of connection technology that constitutes the most important part of the timber frame structure techniques.

ASMAZ
timber structures



WORKING SYSTEM

Asmaz Ahşap Karkas Yapılar provides unlimited support at every stage of the implementation process in terms of project designing, manufacturing, installation and consultation with its architectural design office which offers creative designs and its manufacturing plant with fast production and specialized technical team.

Asmaz Ahşap Karkas Yapılar works to create projects that will meet the specific requirements of customers.

Asmaz Ahşap Karkas Yapılar produces architectural custom designs, personalized architectural forms and finds solutions based on customers' needs and expectations. After designing architectural projects, static calculations are made by software systems. In order to prepare each manufacturing project; wall panels, floor beams, timber roof trusses and support structures of each project are designed by engineering methods after nature of hazard loads (those generated by natural events such as high winds, earthquake, rain) are properly calculated by engineering analysis for each project. Roof trusses and floor beams are produced with proprietary and certified products by using special galvanized metal connector plates which their engineering calculations have been made.

Construction of structural support system is formed with special mounting accessories at the site of construction after manufacturing wall panels, floor beams and roof trusses in accordance with the project in the factory setting. The supporting structure of a two-story building is completed in 4-6 week quick and trouble-free assembly. After installation of the sheathing wrap of structural system with structural

wood panels from the outer surface and it provides unlimited possibilities to external and internal siding and insulation and trim applications optionally. Timber Framed Structure with structural load-bearing, floor beams, roof trusses thanks to large openings allowing to pass through, is a system preferred in all kinds of industrial and commercial buildings and it provides a seamless connection and unlimited solutions due to compatible with different structural elements.

Timber frame projects are initiated by making a design based on the concept. Even if there is no any architectural project, architectural design team may work with end-users and create personalized designs and projects.

Engineering team makes a static calculation of the related structure and also an engineering design of its structural load-bearing system, after the conclusion of architectural project. After that, production team takes over the project to start production. Timber frame erection crew takes over continuation of the process to complete the project on site after completion of its production.



Project is delivered at the stage of basic or advanced structure in situ by ASMAZ Ahşap Karkas Yapılar when taken over such a project at the stage of designing. Here are the details of delivery at the stage of basic or advanced structure:

- Engineering calculations and production projects,
- Production of timber framed structure including structural load-bearing system
- Wall panels, joists, roof trusses,
- Installation of timber frame load-bearing walls
- Wall sheathing with structural wood panels from the outer surface
- Floor beams sheathed with structural wood panels
- Roof sheathed with structural wood panels
- Heat insulation to be applied for walls, floors and roof
- Plasterboard application for inner surface of exterior walls and both surface of interior walls and under floor and roof framing
- Exterior doors, interior doors, windows and joinery applications
- Roof waterproofing application on roof framing
- Roof sheathing
- Exterior sheathing application on exterior waterproofing membrane

We also provide turn-key services upon receiving a request for special project

ASMAZ Ahşap Karkas Yapılar offers unlimited design solutions, faultlessly efficient production, and fast and smooth installation process with customer-oriented service approach by using latest technologies in the production facility located in Yalova.

SOLUTION PARTNERS

ASMAZ Ahşap Karkas Yapılar has ongoing collaboration and solution partnership agreements with industry leading corporations. These agreements include project design and engineering, as well as authorized representation and after-sale service warranty agreements of EN certified structural wood products.

BAMBUDECK

ASMAZ Ahşap Karkas Yapılar started to use bamboo, which has become the most popular product in the world for decking and siding in recent years. Representative brand name is Bambudeck. Bambudeck has high density, flexible bending strength and the architectural surroundings, which are the force of tension; high-tech, environment-friendly, called vegetable steel new decking and siding product.

MOSSER

Since 2012, ASMAZ Ahşap Karkas Yapılar has also been the Turkish representative of Mosser Company from Austria, one of Europe's high-tech certified structural laminated wood producers.

SIENNA PASIFIC WINDOWS / HURD WINDOWS AND DOORS

In 2009, ASMAZ Ahşap Karkas Yapılar has been the Turkish representative of Hurd Windows and Doors which is one of the most prominent wooden window frame manufacturers in the United States and as a representative it continues providing sales and after-sales services for Hurd Windows and Doors products in Turkey.



ASMAZ

timber structures



Our Projects

Topkapı Palace Museum Fatih Mansion Roof Reconstruction Project *İstanbul*



We are excited and proud to realize the roof reconstruction project of Topkapı Palace Museum Fatih Mansion, one of the most valuable historical and cultural assets of Istanbul and even the world.

In Topkapı Palace Museum Fatih Mansion's 22 meters-long roof reconstruction, we used certified structural wood products and nails, screws and fasteners in special sections in hipped roof manufacturing. After the production was completed in our factory, we made prototype assemblies at the factory to ensure flawless assembly in the field and to anticipate possible assembly problems. Following the transfer of roof material to the site, the assembly application was carried out in a short period of time by our team, each of whom is an expert in their field.



ASMAZ

ahşap karkas yapılar

Topkapi Palace Museum Fatih Mansion Dome Roof Reconstruction Project *istanbul*



ASMAZ

ahşap karkas yapılar

Topkapi Palace Museum Fatih Mansion wooden dome roof reconstruction structures were manufactured in our factory in Yalova. A total of 32 dome modules consisting of curved structural laminated wooden beams were manufactured for two domes. Prototype assembly of the modules at the factory without going to the field ensured that the application in the field was error-free and fast. Topkapi Palace Museum Fatih Mansion Roof Reconstruction project is one of the projects that we are very proud to have delivered.

Historical Building Kalkavan Mansion

Yeniköy / İstanbul



Installation



ASMAZ
timber structures

Kalkavan Mansion that is one of Turkey's iconic historical mansions located in Yeniköy is under restoration. Kalkavan Mansion was built in 1850s with French architecture style by Sultan Abdülaziz and Stephan Damaryan who was well-known that time and had worked in printing industry for the 2nd Sultan Abdülhamit. Restitution and restoration projects for -3.5 storey including its basement of Kalkavan Mansion are carried out by Emrah Çelenk Mimarlık and also the mansion's architectural works undertaken by Kırmızıtoprak Mimarlık.

Historical Building Cavit Paşa Mansion

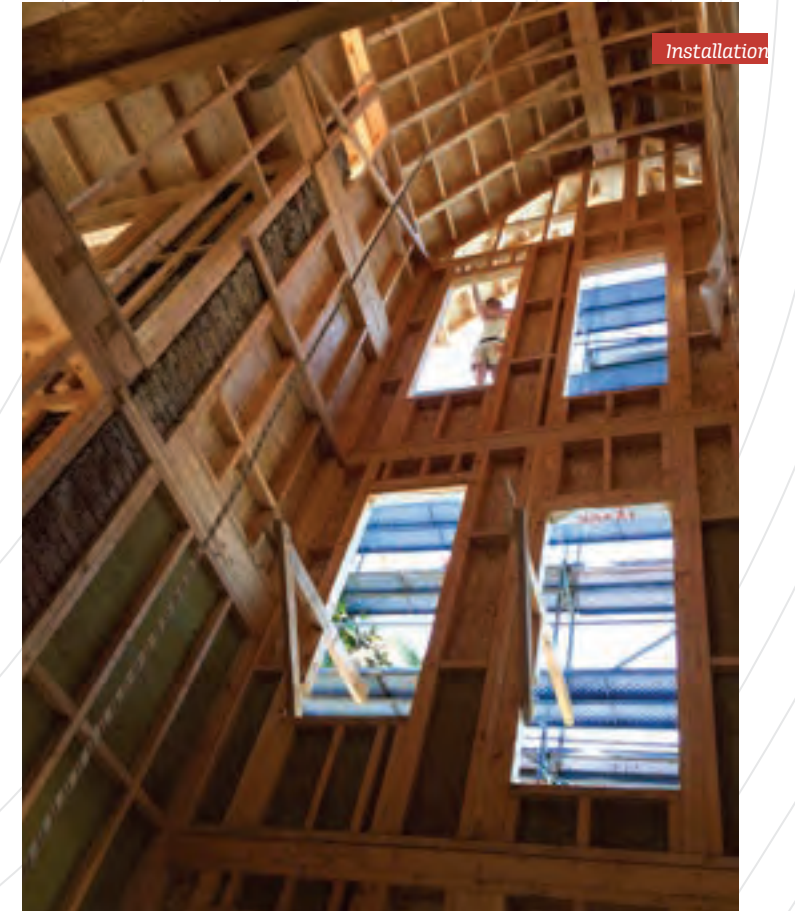
Bağdat Caddesi / İstanbul



The last one of the 52 historic mansion located on Baghdad Street, Cavit Paşa Mansion restoration project began. The mansion is historic building of the first degree located next to historic fountain Çatalçeşme between Suadiye and Bostancı and was built in the late 18th century and the early 19th century and draws attention with its steep roof, inspired by the Swiss Chalet.

ASMAZ
timber structures

Cavit Paşa Mansion which its project investment is made by Berkolan Gayrimenkul Yatırım, is one of the symbols of Bağdat Street.



Seddülbahir Castle Bab-ı Kebir Gate

Çanakkale



ASMAZ

ahşap karkas yapılar

An Open Air Museum was planned by the Çanakkale Wars Gallipoli Historical Site Administration for the Çanakkale Seddülbahir region, one of the most important historical and cultural values of Turkey, which receives one of the highest number of visitors in the country from around the world. Within the scope of the museum, we realized the implementation of the wooden frame structure project that will revive the Bab-ı Kebir gate, which is the entrance gate of Seddülbahir Castle and was destroyed in the first bombardment. The manufacturing of the project made of structural wood materials was completed in our factory and assembled in the field promptly.

Domed Building

Çanakkale



The Domed Wooden Building structure within the scope of Çanakkale Seddülbahir Castle Open Air Museum has been completed. Domed structural bearing panels were manufactured in our Yalova factory by making 3-angle radius cuts to form a complete dome when brought together. The assembly of these special productions was carried out on site in a short time.

Le Meridien Resort Peninsula Bar

Adabükü / Bodrum



The wooden structure of the beach bar was realized for Le Meridien Bodrum Beach Resort, which is located in Adabükü, Bodrum and is the Turkish ring of an international hotel chain. The production of the project, which has a different architectural design, was carried out in the company's Yalova factory with specially produced structural wood products. The assembly was completed in a short period of time with a large team.

Bambudeck was used as the deck flooring on the beach of Le Meridien Bodrum Beach Resort. Bambudeck, with its innovative, ecological, high quality structure and long-term usage guarantee, is an exterior floor and wall covering product that has attracted a lot of attention in recent years in Turkey as in the world.

ASMAZ

ahşap karkas yapılar

Le Meridien Vitalica

Adabükü / Bodrum



The wooden structure and interior design of the Vitalica Wellness project in Le Meridien Bodrum Beach Resort was completed as the first turnkey project of our company. The manufacturing of the structure was done in Asmaz Wooden Structures Milas branch. In this large-scale structure that will serve as a healthy living center, a wooden structure in harmony with nature was built in accordance with the philosophy of the place, using certified imported structural wood products and compatible wooden fasteners.

The modern interior architectural design of Vitalica Wellness has been carefully completed by our team for the production of all wood-based details.



ASMAZ

ağşap karkas yapılar

Le Meridien Pergola and Deck

Adabükü / Bodrum



Le Meridien Bodrum Beach Resort's pergola and cabana designs and applications were realized for the pool sides and private sunbathing terraces on the beach. Bambudeck was preferred for all outdoor flooring in the facility with its innovative, ecological, high quality structure and long-term usage guarantee. Bambudeck was used in the pool, beach, social areas and Vitalica Wellness.



ASMAZ

ahşap karkas yapılar

Le Meridien Hotel Indoor Swimming Pool Roof Structure

Adabükü / Bodrum



The indoor swimming pool roof structure project of the international hotel chain Le Meridien Resort Hotel located in Adabükü, Bodrum was realized. The manufacturing of the project with structural wood materials was completed at our company's branch in Milas. The assembly of the project was completed in a short period of time with the help of our large team in the field.

ASMAZ

ahşap karkas yapılar



Six Senses Hotel Resort Wood Applications

Kaplankaya / Bodrum



International hotel chain located in Kaplankaya, Bodrum, Pergolata and deck applications of 66 villa type rooms of Six Senses Hotel Resort were realized. The pergolas in different plans and sizes were manufactured from structural laminated wood materials and their assembly was completed. Bamboo, which is widely used in the world but a relatively new material for Turkey, was used for decking. Bambudeck is a durable, natural material that makes a difference in the project with its healthy and stylish visuals.

ASMAZ

ahşap karkas yapılar



Six Senses Car Park

Kaplanlkaya / Bodrum



Within the scope of the construction of all wooden projects of Six Senses Resort located in Bodrum Kaplanlkaya, two parking lot designs and the implementation of the project from structural laminated wood products were realized.

The unit, which will be used as a charging and parking lot for battery-powered vehicles used throughout the facility, was completed and delivered.

ASMAZ

ahşap karkas yapılar

One & Only Children's Playground

Montenegro / Portonovi



A wooden children's playground was manufactured for the luxury hotel chain One&Only Portonovi Resort in Montenegro. CLT / cross laminated wood products were used in the climbing wall and play castle units in the project, whose architectural designs were made abroad. Structural wood and compatible fasteners were used in all wooden materials of the park, and the production was carried out in the company's factory in Yalova. The playground/Jungle Unit was completed in modular form for ease of logistics and installation, and the assembly installation was carried out at the facility in Montenegro.

ASMAZ

ahşap karkas yapılar

One & Only Hotel Towel Cabanas

Montenegro / Portonovi



Towel cabanas / Towel Dispenser Units with movable mechanisms and retractable doors were manufactured from extra quality solid iroko wood for One&Only Portonovi Resort in Montenegro. For the project, the architectural designs of which were made abroad, the cabanas were prepared from imported structural wood materials, and were manufactured in the company's factory in Yalova. The assembly and installation were carried out at the facility in Montenegro.

ASMAZ

ahşap karkas yapılar



15 meters High Wooden Flagpoles

Yalova



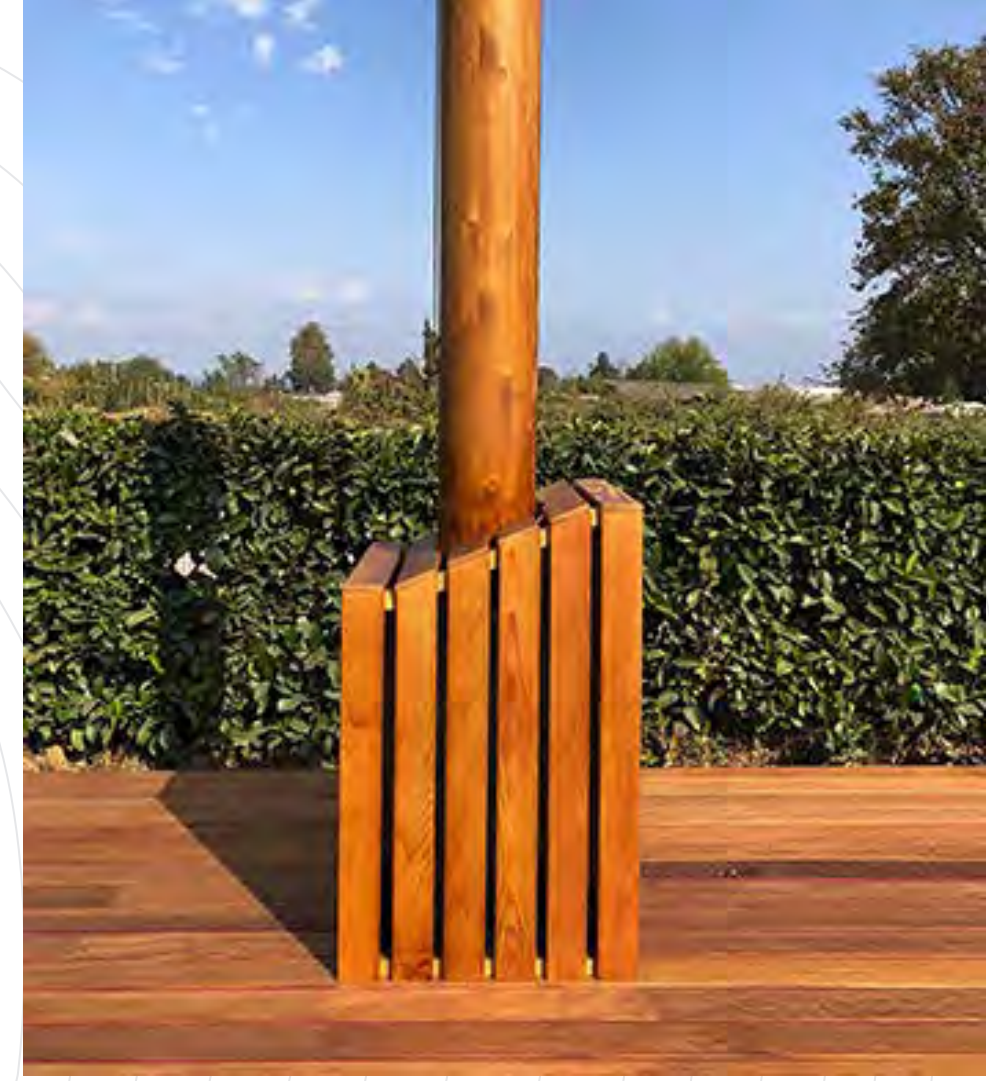
ASMAZ

ahşap karkas yapılar

15 meters-high wooden flagpoles were designed, manufactured and assembled in the garden of Asmaz Wooden Frame Structures' factory in Yalova. The project started with the design and modeling by the architectural group. Static calculations, foundation and connection elements were planned and a detailed manufacturing plan was created. For the flagpoles, GL 24h strength class visual quality, structural laminated wood spruce was used. The height of the flagpoles together with the pedestal reached 15 meters.

In the project, structural laminated wood was used in conical form, with a bottom diameter of 20 cm and a top diameter of 10 cm in two different sections. The flag connection pulley mechanism was specially designed and manufactured with stainless steel material, including a 360-degree rotating bearing and a flag sending rope pulley with a Moon Star Chromium Nickel realm.

Vacuum impregnated solid pine carcasses are used for the deck base of wooden flagpoles. The base is completed with a solid iroko deck covering.



Historical Artifact Süreyya Paşa Mansion

Yeniköy / İstanbul



The entire structural system of Süreyya Paşa Mansion, which is registered as a second-degree historical monument, was reconstructed with the wooden frame construction technique. It is one of the most important mansions of the city with its location on the Bosphorus.



ASMAZ

ahşap karkas yapılar



Chicken Coop

Erzincan



ASMAZ
ahşap karkas yapılar

The engineering calculations and timber structure implementation of a chicken rack and chicken house project were realized for a farm in Erzincan. Designed for approximately 600 chickens, the manufacturing project of the hoist and chicken run was completed in the company's factory in Yalova, shipped to Erzincan and assembled in as little as five days. In the poultry house project, structural laminated timber materials in accordance with EN standards of European Timber Frame Construction Regulation were used for the construction of the structure. Structural timber board pine (plywood) was used for the manufacture of the nesting box and stainless steel hinges were used as fasteners.

Robert College Outdoor Class

Arnavutköy / İstanbul



An outdoor classroom project made of structural wood products was realized for Robert College. The wooden outdoor classroom structure, whose architectural project was designed by Asmaz Timber Frame Structures, consists of a seating group, modular work tables and canopy structure. The project is the first example in Turkey of outdoor classroom structures that are widely used in the world.

ASMAZ

ahşap karkas yapılar

Project of Haliç Terrace

Şişhane / İstanbul



It is an open public space arranged as an urban square designed by Şanal Mimarlık at Beyoğlu Pera/Galata/Şişhane/Tunnel crossing located. The terrace that facing at the beauty of Haliç is providing one of the important contribution of İstanbul's urban design with the curved wooden walkways and children's playing area applications.

ASMAZ
timber structures



Historical Building Sarı Konak Hotel

Amasya



The Yellow Mansion Hotel (Sarı Konak) is a historic building of the first degree remained from Ottoman period and is one of the largest mansions in Amasya on Yesilirmak River, located at the south end of the Seljuk Kunch Bridge.

The Yellow Mansion Hotel showcases the most defining characteristics of Ottoman style of traditional wooden architecture in Amasya with its 1000m² usable space on two floors and the interior courtyard facing the river and contributes greatly to local tourism.

ASMAZ

timber structures

Installation



Adile Naşit Library and Children's Playground

Beylikdüzü / İstanbul



The Children's Playground Project in Istanbul Beylikdüzü Cultural Center has been completed. The project, which was built as an indoor playground and library, was manufactured using structural laminated wood and structural cross laminated wood (CLT) materials. The project, which was completed with non-toxic paints and varnishes in order not to harm health, started its activities in 2018.



ASMAZ

ahşap karkas yapılar

CLT Chalet

Bursa



A chalet project in Bursa was realized using Cross Laminated Timber (CLT) Structural Cross Laminated Timber, a high-tech building material. The static design of the project was calculated taking into account the climatic conditions and seismicity factors of the region, followed by production and assembly. All exterior and interior walls and wall panels were completed with bidirectional CLT decks, while the floor structures were completed with unidirectional structural laminated timber floor decks. The building was completed in a total of 17 days from manufacturing to assembly.

ASMAZ

ahşap karkas yapılar



Historical Building

Üsküdar / İstanbul



It's located in Sultantepe neighbourhood on the back of Üsküdar Paşalimanı, where has a wide view from Marmara Sea to Bosphorus Bridge. Restoration of the second degree historical building called as Fehmi Pasha's mansion was completed by ASMAZ Ahşap Karkas Yapılar. 2.5 storey pavilion which is eye-catching with its vaccine colour and panels of siding to be used as a house, is located in the Bosphorus, İstanbul as one of the unique historical buildings.

ASMAZ

timber structures



Installation



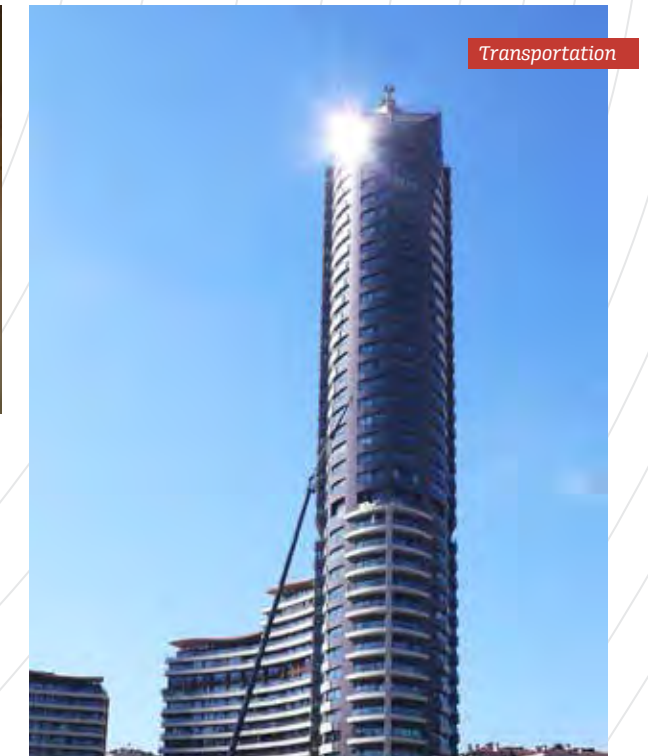
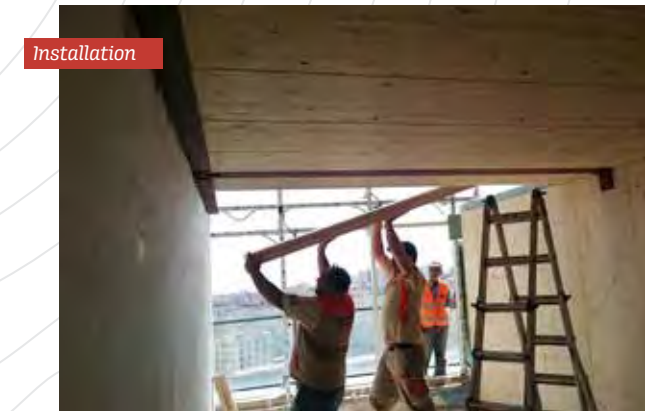
Installation



Installation

Akasya Koru Tower

Acibadem / İstanbul



Four timber-framed duplex apartments were built on the 15th floor of Koru Tower located at Akasya Park in Acibadem, İstanbul. Construction of these very special boutique apartments has been completed in such a short period of 6 weeks without interfering daily activities at Koru Tower in Akasya Park that is one of İstanbul's most popular shopping / living complexes.

Historical Building Köseleciler Mansion

Anadolu Hisarı / İstanbul



Reconstruction of the mansion which was registered as a second degree historical monument that located next to İstanbul Anatolian Fortress Pier, was made with the wooden framework technique as a turn-key project. After the reconstruction, this stunning structure became one of the most important mansions in İstanbul that regained its original appearance.

ASMAZ
timber structures



Cabin / Tiny House

İstanbul



The design and implementation of a model cabin/tiny house project has been completed. Designed as two rooms, an entrance and a bathroom, the cabin is planned to accommodate 4 people comfortably.

Its width is 2.60m. its length is 6.70m. total living area is 17,50m². The front facade, ceiling and interior walls of the cabin are made of wood carcass structure from structural laminated wood material as a wood carcass structure. 8 cm CLT wall panel decks were used on the back and side walls, as well as on the floor coverings. 10 cm massive structural floor slabs are used. The cabin has been insulated to provide climatic comfort in all seasons. Cabin's doors and windows are made of solid wood, and low-e double-glazed glass is used in the windows. The 80cm x 80cm surfaces that are used in the bathroom, shower cabin, washbasin, toilet and urinal are selected from specially manufactured products designed for small spaces.

The furniture inside the cabin is made of solid wood materials custom made for the project.

ASMAZ

ahşap karkas yapılar

Wooden Dome

Turkmenistan



ASMAZ
ahşap karkas yapılar

Located on the terrace of the 13-storey Russian Federation Embassy Building in Ashgabat, the capital of Turkmenistan, the 12m. wide structure. Radius trusses were created from structural laminated wood, without using any metal connection technique products, and it was realized with wooden dowels with an interlocking system. The building, which is one of the tallest buildings in Ashgabat, stands out with its location, architecture and construction technique.

Çanakkale Seramik Headquarters

Levent / İstanbul



Two different structures which were planned as a winter garden for showroom and a café and projected by Erginoğlu and Çalışlar Architecture, were built by using structural laminated wooden joists in the garden of Çanakkale Seramik Headquarters in Levent/Istanbul. It is a modern project created a cosy venue reflecting the warmth of wood and glass is enhanced in combination with the use of wooden.



Survey



Installation



Historical Mosque Roof Trusses

Bulgaria



Shipping



The design and manufacture project of the roof trusses of a historical mosque in Bulgaria was realized. In the project, 11 large and 30 small roof trusses were manufactured from structural laminated wood material in high strength class and connected with special screws and connection technique elements. The large trusses are 17m. long and 4m. high.

ASMAZ

ahşap karkas yapılar

Brands we represent



ASMAZ

timber structures

ASMAZ

timber structures

Asmaz Enerji İletişim İnşaat Taahhüt Sanayi Tic. Ltd. Şti.

Merkez Mah.Yeni Sanayi Cad. No:31 Taşköprü/Çiftlikköy

YALOVA / TURKEY

T. +90 226 353 30 23 F. +90 226 353 30 03

www.ahsapkarkas.com.tr

İstanbul Office

Konaklar Mah. İhlamur Sok. No:3/2

4.Levent Beşiktaş 34330 İstanbul / Türkiye

T. +90 212 212 55 77

Milas

Güneş Mah. Labranda Bulvarı No 89

Milas 48200 Muğla

(Belediye Tüpeposu ve Hayvan Pazarı karşısı)

T. +90 252 512 77 70

ASMAZ

TIMBER INC.

ASMAZ

timber engineering

ASMAZ

communication



ULUSAL
AHŞAP
BİRLİĞİ
TURKISH
TIMBER
ASSOCIATION